

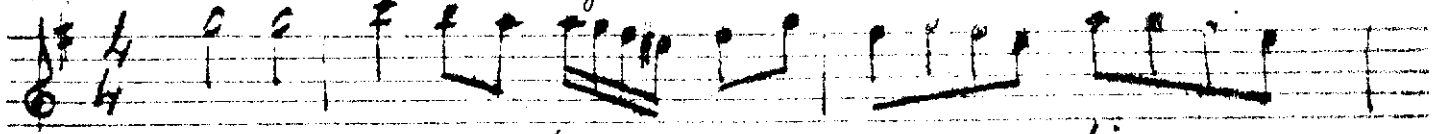
# Bu ne lebdir

# tri mistafa

Çi sa

vul

ey



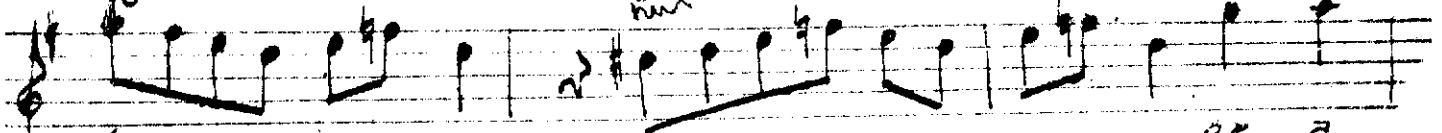
Bu

ne

lep

dir

ne ya

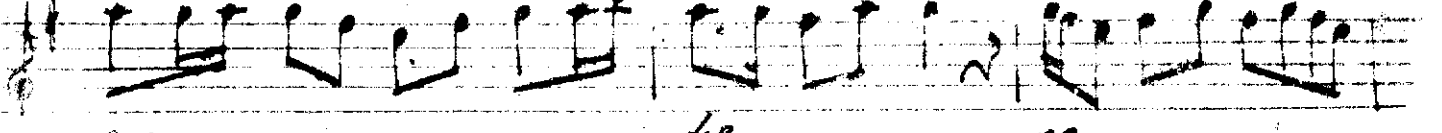


lun

ne

da

ne a



ya

man

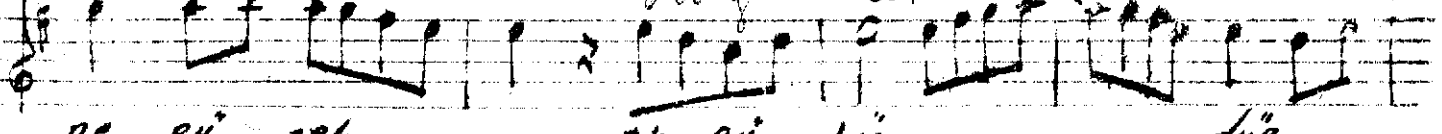
dir

ah ge

lis

ne

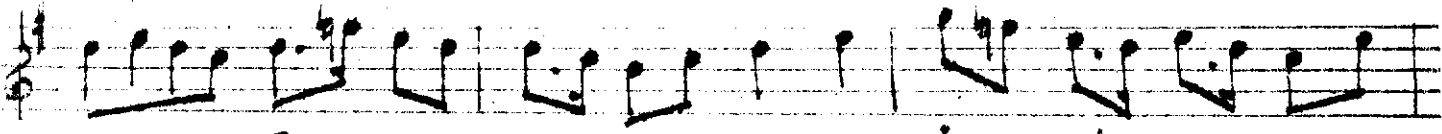
dir



ne ou zel

ah ou lu's

du's



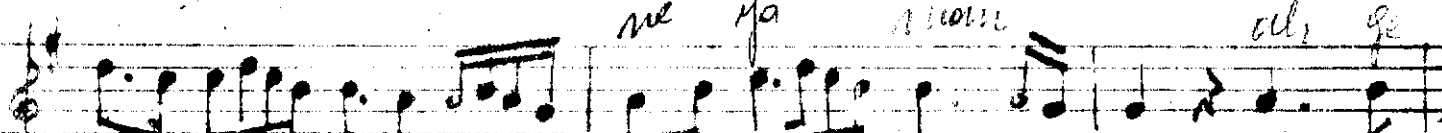
Bu

om

Ru'm

ce

nim a



ne

ya

ah

ah ge



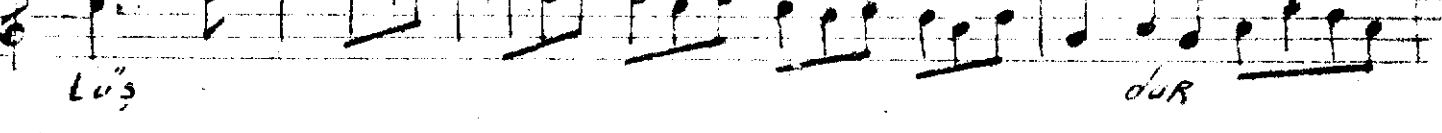
man

ne

ou

zel

ah ou

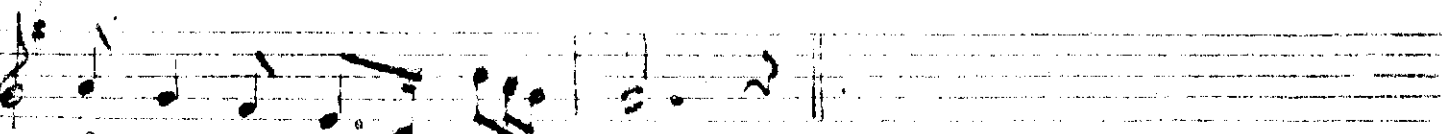


lis

Lu's

du's

du's



Bu

ge LiR ol ce Fa

cu Kan Li

Ki Liç e

Lin de sar

hoş öm Rüm canna men Ki Linç e Lin

de de sar hoş

sanal ay gömül yolundan ki yaman otisider

İht

ünay Kosul